

T M 1 1 - 5 8 0 5 - 6 4 0 - 2 3 P

TECHNICAL MANUAL

**ORGANIZATIONAL AND DIRECT SUPPORT MAINTENANCE
REPAIR PARTS AND SPECIAL TOOLS LISTS
FOR**

**SCANNER GROUPS, TELEPHONE TRAFFIC
0A-8746(V)1/GT (NSN 5805-00-143-4670)
AND
0A-8746(V)2/GT (NSN 5805-00-151-3925)**

**HEADQUARTERS, DEPARTMENT OF THE ARMY
NOVEMBER 1977**

TECHNICAL MANUAL
No. 11-5805-640-23P

HEADQUARTERS
DEPARTMENT OF THE ARMY
WASHINGTON, DC, 9 November 1977

ORGANIZATIONAL AND DIRECT SUPPORT MAINTENANCE
REPAIR PARTS AND SPECIAL TOOLS LISTS
FOR
SCANNER GROUPS, TELEPHONE TRAFFIC
OA-8746(V)1/GT (NSN 5805-00-143-4670)
AND
OA-8746(V)2/GT (NSN 5805-00-151-3925)
Current as of 16 July 1977

REPORTING OF ERRORS

You can improve this manual by recommending improvements using DA Form 2028-2 (Test) located in the back of the manual. Simply tear out the self-addressed form, fill it out as shown on the sample, fold it where shown, and drop it in the mail.

If there are no blank DA Form 2028-2 (Test) in the back of your manual, use the standard DA Form 2028 (Recommended Changes to Publications and Blank Forms) and forward to the Commander, US Army Electronics Command, ATTN: DRSEL-MA-Q, Fort Monmouth, NJ 07703.

In either case a reply will be furnished direct to you.

Table of Contents

	Page	Illus. Figure
SECTION I. INTRODUCTION	5	
Group II. Repair parts list.....	5	1
00 Telephone Scanner Group OA-8746(V) 1/GT.....	5	
01Scanner,TelephoneTrafficTA-917/GT.....	9	2
0101 Assembly, interface control A5 (See next higher assembly)..		
SECTION III. Special tools list (Not applicable).....		
IV National stock number and part number index.....	10	

*This manual supersedes as much of TM 11-5805-640-12, 16 September 1974, as pertains to repair parts and special tools list.

S E C T I O N I

INTRODUCTION

1. Scope

This manual lists spares and repair parts; special tools; special test, measurement, and diagnostic equipment (TMDE), and other special support equipment required for performance of organizational and direct support maintenance of the OA-8746(V)1/GT and OA-8746(V)2/GT. It authorizes the requisitioning and issue of spares and repair parts as indicated by the source and maintenance codes.

2. General

This Repair Parts and Special Tools List is divided into the following sections :

a. Section II. Repair Parts List. A list of spares and repair parts authorized for use in the performance of maintenance. The list also includes parts which must be removed for replacement of the authorized parts. Parts lists are composed of functional groups in numeric sequence, with the parts in each group listed in figure and item number sequence.

b. Section III. Special Tools List. Not applicable.

c. Section IV. National Stock Number and Part Number Index. A list, in National item identification number (NIIN) sequence, of all National stock numbers (NSN) appearing in the listings, followed by a list, in alphameric sequence, of all part numbers appearing in the listings. National stock numbers and part numbers are cross-referenced to each illustration figure and item number appearance.

3. Explanation

a. Illustration. This column is divided as follows :

(1) Figure number. Indicates the figure number of the illustration on which the item is shown.

(2) Item number. The number used to identify item called out in the illustration.

b. Source, Maintenance, and Recoverability (SMR) Codes.

(1) Source code. Source codes indicate the manner of acquiring support items for maintenance, repair, or overhaul of end items. Source

codes are entered in the first and second positions of the Uniform SMA Code format as follow :

Code -	Definition
PA-Item procured and stocked for anticipated or known usage.	
XD-A support item that is not stocked. When required, item will be procured through normal supply channels.	

NOTE

Cannibalization or salvage may be used as a source of supply for any items source coded above except those coded XA and aircraft support items are restricted by AR 700-42.

(2) Maintenance code. Maintenance codes are assigned to indicate the levels of maintenance authorized to USE and REPAIR support items. The maintenance codes are entered in the third and fourth positions of the Uniform SMR Code format as follows:

(a) The maintenance code entered in the third position will indicate the lowest maintenance level authorized to remove, replace, and use the support item. The maintenance code entered in the third position will indicate one of the following levels of maintenance :

Code	Application/Explanation
O-Support item is removed, replaced, used at the organizational level.	
F-Support item is removed, replaced, used at the direct support level.	

(b) The maintenance code entered in the fourth position indicates whether the item is to be repaired and identifies the lowest maintenance level with the capability to perform complete repair (i.e., all authorized maintenance functions). This position will contain one of the following maintenance codes :

Code	Application/Explanation
F—The lowest maintenance level capable of complete repair of the support item is the direct support level.	
Z—Nonreparable. No repair is authorized.	

(3) Recoverability code. Recoverability codes are assigned to support items to indicate the disposition action on unserviceable items. The recov-

erability code is entered in the fifth position of the Uniform SMR Code format as follows:

<i>Recoverability codes</i>	<i>Definition</i>
Z-Nonreparable item.	When unserviceable, condemn and dispose at the level indicated in position 6.
F-Reparable item.	When uneconomically reparable, condemn and dispose at the direct support level.

c. National Stock Number. Indicates the National stock number assigned to the item and will be used for requisitioning purposes.

d *Part Number*. Indicates the primary number used by the manufacturer (individual, company, firm, corporation, or Government activity), which controls the design and characteristics of the item by means of its engineering drawings, specifications, standards, and inspection requirements to identify an item or range of items.

NOTE

When, a stock numbered item is requisitioned, the repair part received may have a different part number than the part being replaced.

e. *Federal Supply Code for Manufacturer (FSCM)*. The FSCM is a 5-digit numeric Code listed in SB 708-42 which is used to identify the manufacturer, distributor, or Government agency, etc.

f. Description. Indicates the Federal item name and, if required, a minimum description to identify the item.

g. *Unit of Measure (U/M)*. Indicates the standard of the basic quantity of the listed item as used in performing the actual maintenance function. This measure is expressed by a two-character alphabetical abbreviation (e.g., ea, in, pr, etc). When the unit of measure differs from the unit of issue, the lowest unit of issue that will satisfy the required units of measure will be requisitioned.

h. *Quantity Incorporated in Unit*. Indicates the quantity of the item used in the breakout shown on the illustration figure, which is prepared for a functional group, subfunctional group, or an assembly.

4. Special information

a. Usable on codes are shown in the description column. Uncoded items are applicable to all models. Identification of the usable on codes used in this publication are:

Code	Used on
5JO	OA-6746(V)1/GT
5KL	OA-8746(V)2/GT

b. The following publication pertains to the OA-8746(V)1/GT and OA-8746(V)2/GT and its components:

T M 1 1 - 5 840-640-13, Scanner Groups, Telephone OA-8746(V)1/GT and OA-8746(V)2/GT

5. How to Locate Repair Parts

a. When National stock number or part number is unknown.

(1) *First*. Using the table of contents, determine the functional group within which the item belongs. This is necessary since illustrations are prepared for functional groups and listings are divided into the same groups.

(2) *Second*. Find the illustration covering the functional group to which the item belongs.

(3) *Third*. Identify the item on the illustration and note the illustration figure and item number of the item.

(4) *Fourth*. Using the Repair Parts Listing, find the figure and item number noted on the illustration.

b. When National stock number or part number is known.

(1) *First*. Using the Index of National Stock Numbers and Part Numbers, find the pertinent National stock number or part number. This index is in NIIN sequence followed by a list of part numbers in alphanumeric sequence, cross-referenced to the illustration figure number and item number.

(2) *Second*. After finding the figure and item number, locate the figure and item number in the repair parts list.

6. Abbreviations
Not applicable.

(Next printed page is 4.)

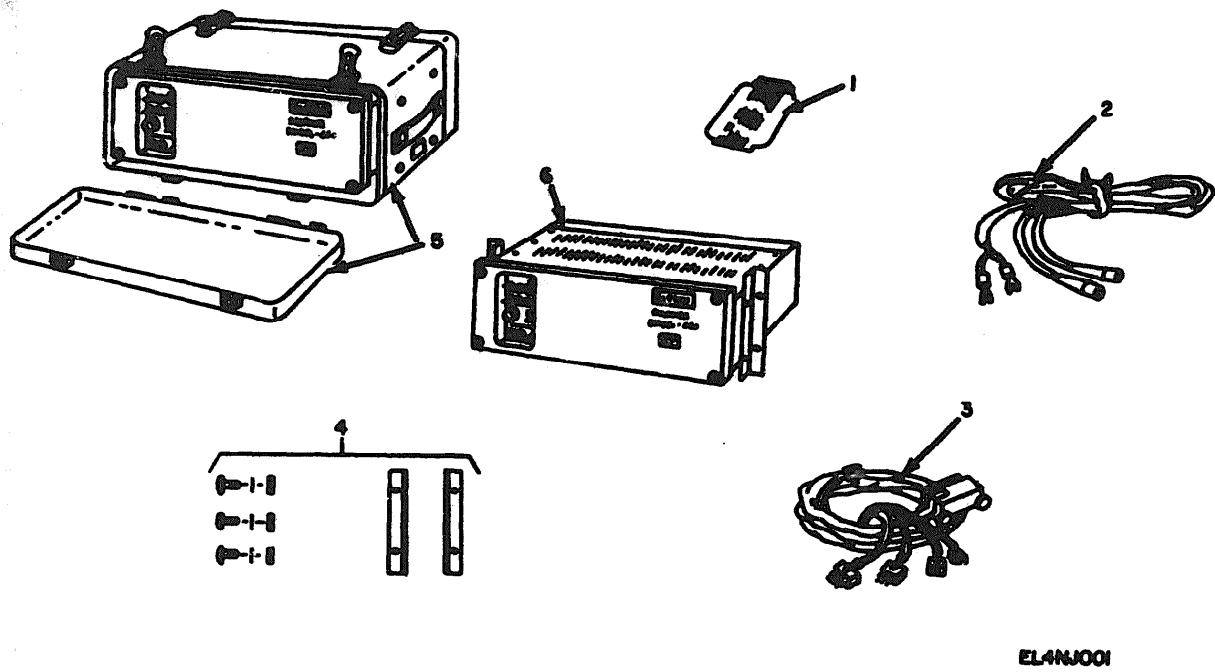


Figure 1. Telephone Traffic Scanner Group OA-8746(V)1/GT and OA-8746(V)2/GT

SECTION II

TM11-5805-640-23P

9) ILLUSTRATION		10)	11)	12)	13)	14)	15)	16)	
(a) FIG NO.	(b) ITEM NO.	SER CODE	NATIONAL STOCK NUMBER	PART NUMBER	PCSN	DESCRIPTION	USABLE QN CODE	U/M	QTY INC IN UNIT
GROUP 00 TELEPHONE TRAFFIC SCANNER GROUP									
0A-8746(V)1/GT AND 0A-8746(V)2/GT									
1	1	PADZZ	6130-00-012-3064	107983	88380	EXTENDER CARD		EA	1
1	2	XBZZZ		83016	18672	POWER CABLE	5KL	EA	1
1	3	PADZZ	5095-00-163-9003	368097-1	18672	INPUT CABLE	5J0	EA	1
1	3	XBZZZ		368097-2	18672	INPUT CABLE	5KL	EA	1
1	4	XBZZZ		378019	18672	KIT, WTS, HEN		EA	1
1	5	XBZZZ		CY73736T	88068	CASE, ELEC, EQPT	5KL	EA	1
1	5	XBZZZ		CY73736T	88068	CASE, ELEC, EQPT	5J0	EA	1
1	6	PADPP	5906-00-281-3866	7A9176V	88098	SCANNER, TEL TRF		EA	1

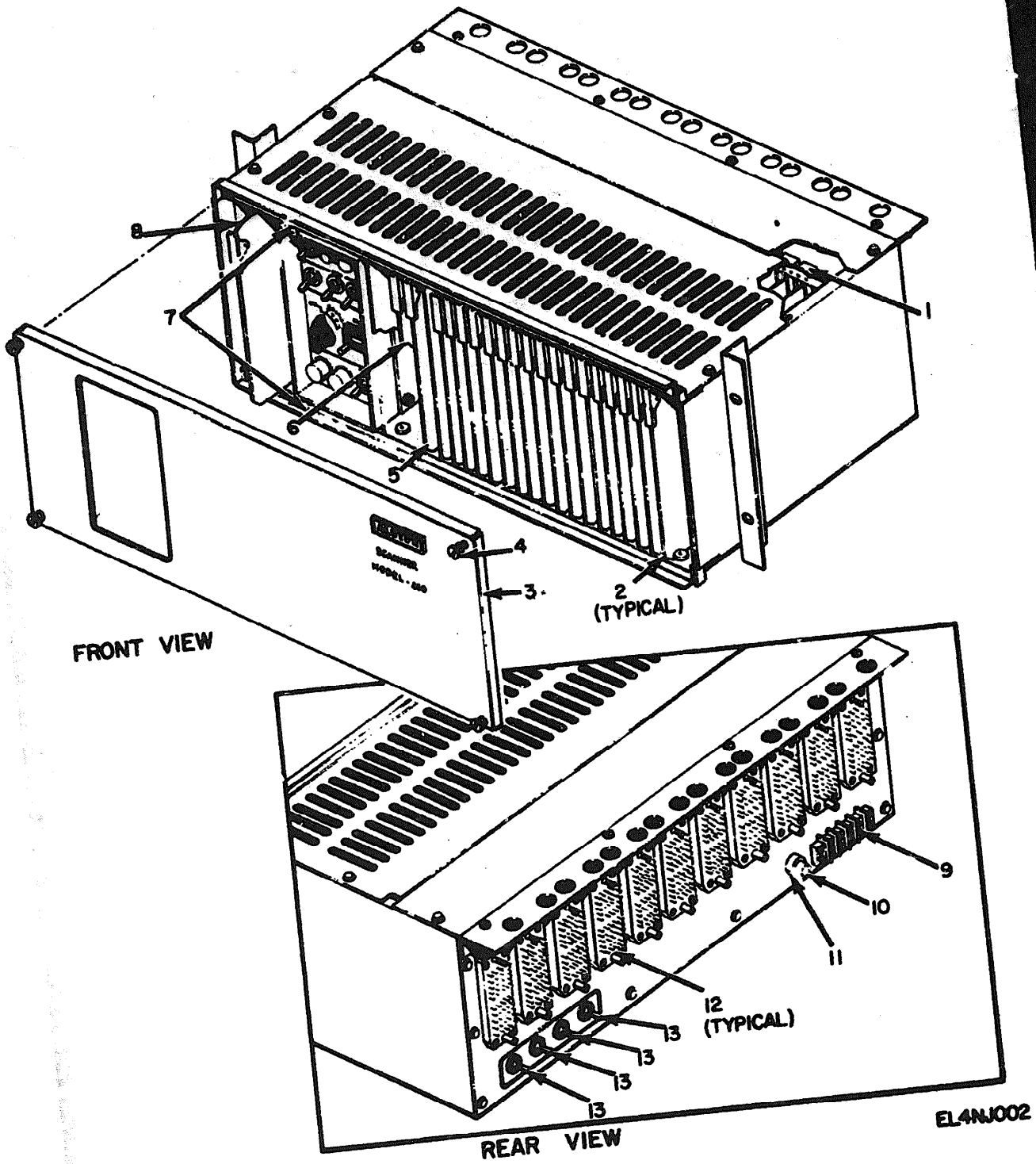


Figure 2. Scanner, Telephone Traffic TA-917/GT (Sheet 1 of 3).

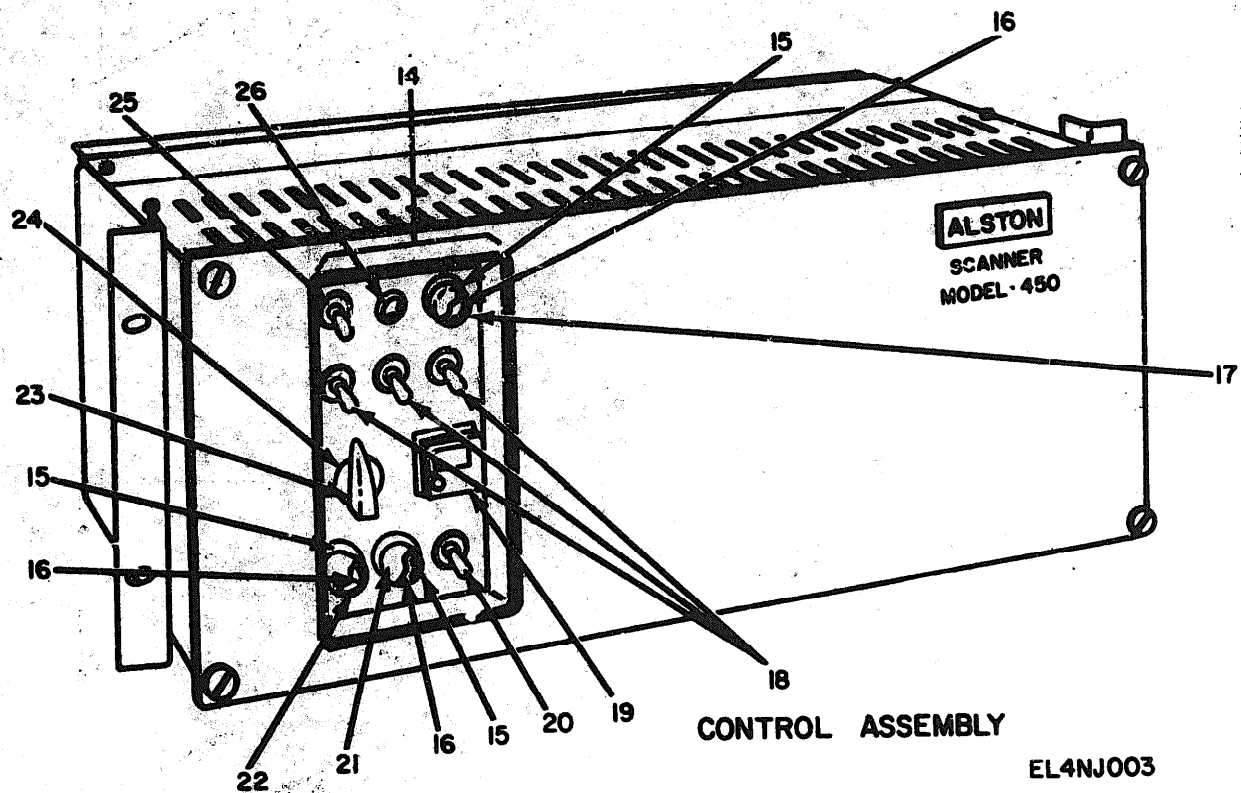


Figure 2, Scanner, Telephone Traffic TA-917/GT (Sheet 2 of 3).



Figure 2, Scanner, Telephone Traffic TA-917/GT (Sheet 3 of 3).

SECTION II

TM11-5805-640-23P

ILLUSTRATION		SNR CODE	NATIONAL STOCK NUMBER	PART NUMBER	PCMN	DESCRIPTION	USABLE ON CODE	QTY INC IN UNIT
(a) FIG NO.	(b) ITEM NO.							
GROUP 01 Scanner, Telephone Traffic TA-917/GT								
2	1	XDFZZ		114003		10672	CONNECTOR, ELECTRICAL	EA 21
2	2	PAFZZ	5805-00-167-1102	307036		10672	ASSEMBLY, CKT CARD AAATHRUAMS	EA 17
2	3	XDFZZ		208568		10672	COVER, FRONT	EA 1
2	4	XDFZZ		216035		10672	THUMBSCREEN	EA 4
2	5	PAFZZ	5805-00-159-0060	301034		10672	ASSEMBLY, CKT CARD A3	EA 1
2	6	PAFZZ	5806-00-158-2851	301033		10672	ASSEMBLY, CKT CARD A2	EA 1
2	7	XDFZZ		MS10153-133		96806	SCREEN	EA 2
2	8	PAFZZ	5805-00-164-3610	331004		10672	ASSEMBLY, CKT CARD A1	EA 1
2	9	XDFZZ		4-140Y		71786	TERMINAL BOARD	EA 1
2	10	PAQZZ	5920-00-226-9964	ASC2		71400	FUSE, CARTRIDGE	EA 1
2	11	PAFZZ	5920-00-213-1878	HTA-DD		71400	FUSEHOLDER	EA 1
2	12	XDFZZ		213-50-00-135		71786	CONNECTOR, ELECTRICAL	EA 11
2	13	XDFZZ		03060		04009	SWITCH, TOGGLE SPST	EA 4
2	14	PAFFF	5805-00-177-3521	220038		10672	ASSEMBLY, INTFC CONT A5	EA 1
2	15	PAFZZ	6210-00-984-6167	55-0428-09-301		72619	BASE, LAMP	EA 3
2	16	PAQZZ	6240-00-715-0037	48-C-2		00365	LAMP, INCAND	EA 3
2	17	XDFZZ		135-1471		72619	LENS, RED	EA 1
2	18	PAFZZ	5930-00-901-4882	03082		04009	SWITCH, TOGGLE SPDT	EA 3
2	19	PAFZZ	6680-00-262-9370	FE3R48VDC		12323	REGISTER, DIGT. MECH	EA 1
2	20	PAFZZ	6130-00-046-5021	03065		04009	SWITCH, TOGGLE SPST	EA 1
2	21	XDFZZ		135-1473		72619	LENS, AMBER	EA 1
2	22	XDFZZ		135-1472		72619	LENS, GREEN	EA 1
2	23	XDFZZ		PKS908		10672	KNOB	EA 1
2	24	PAFZZ	5930-00-379-0363	3236J		76055	SWITCH, ROTARY	EA 1
2	25	PAFZZ	5930-00-063-2885	03064		04009	SWITCH, TOGGLE DPDT	EA 1
2	26	PAFZZ	5930-00-543-1237	23-1		01073	SWITCH, PUSH	EA 1
2	27	XDFZZ		385042		10672	ASSEMBLY, CKT CARD	EA 1

STOCK NUMBER	FIGURE NO.	ITEM NO.
0120-00-010-3004	1	1
0200-00-040-3021	2	20
0200-00-040-3025	2	25
0200-00-100-0000	2	5
0200-00-100-0000	1	3
0200-00-100-3010	2	8
0200-00-100-3010	2	2
0200-00-177-3021	2	14
0200-00-100-3023	2	6

STOCK NUMBER	FIGURE NO.	ITEM NO.
0200-00-210-1070	2	11
0200-00-220-0004	2	10
0200-00-200-0070	2	19
0200-00-001-3000	1	6
0200-00-370-0000	2	24
0200-00-040-1037	2	26
0200-00-710-0007	2	16
0200-00-001-0002	2	18
0210-00-004-0107	2	15

PART NUMBER	FSCN	FIG. NO.	ITEM NO.
ABC2	71400	2	10
CY70700T	00000	1	5
CY70700T	00000	1	5
PCAM0000C	12020	2	10
NTA-00	71400	2	11
NS10100-100	00000	2	7
PC0000	10072	2	23
NS0170T	00000	1	6
NS0100	00000	1	1
114000	10072	2	1
100-1471	70010	2	17
100-1472	70010	2	22
100-1473	70010	2	21
000000	10072	2	3
010-00-00-100	71700	2	12
010000	10072	2	4
200000	10072	2	14
20-1	01070	2	26

PART NUMBER	FSCN	FIG. NO.	ITEM NO.
00000	70000	2	24
00000	10072	2	8
00000-1	10072	1	3
00000-2	10072	1	3
00000	10072	1	4
00000	10072	2	6
00000	10072	2	5
00000	10072	2	2
00000	10072	2	27
4-1007	71700	2	9
00-C-2	00000	2	16
00010	10072	1	2
00000	04000	2	13
00000	04000	2	10
00000	04000	2	25
00000	04000	2	20
00000	70010	2	15
00-0000-00-001			



SOMETHING WRONG WITH THIS MANUAL?

THEN... JOT DOWN THE DOPE ABOUT IT ON THIS FORM, TEAR IT OUT, FOLD IT AND DROP IT IN THE MAIL!

FROM: (YOUR UNIT'S COMPLETE ADDRESS)
 Commander
 Stateside Army Depot
 ATTN: AMSTA-US
 Stateside, N.J. 07703
 DATE 10 July 1975

PUBLICATION NUMBER: TM 11-5840-340-12 DATE: 23 Jan 74 TITLE: Radar Set AN/SPS-76

BE EXACT... PIN-POINT WHERE IT IS

IN THIS SPACE TELL WHAT IS WRONG AND WHAT SHOULD BE DONE ABOUT IT.

PAGE NO.	PARAGRAPH	FIGURE NO.	TABLE NO.
2-25	2-28		
3-10	3-3		3-1
5-6	5-8		
		FO3	

Recommend that the installation antenna alignment procedure be changed through to specify a 2° IFF antenna lag rather than 1°.

REASON: Experience has shown that with only a 1° lag, the antenna servo system is too sensitive to wind gusting in excess of 20 knots, and has a tendency to rapidly accelerate and decelerate as it hunts, causing strain to the drive train. Hunting is minimized by adjusting the lag to 2° without degradation of operation.

Item 5, Function column. Change "2 db" to "3db."

REASON: The adjustment procedure for the TRANS POWER FAULT indicator calls for a 3 db (500 watts) adjustment to light the TRANS POWER FAULT indicator.

Add new step f.1 to read, "Replace cover plate removed in step e.1, above."

REASON: To replace the cover plate.

Zone C 3. On J1-2, change "+24 VDC to "+5 VDC."

REASON: This is the output line of the 5 VDC power supply. + 24 VDC is the input voltage.

TEAR ALONG DOTTED LINE

TYPED NAME, GRADE OR TITLE, AND TELEPHONE NUMBER
 SSG I. M. DeSpirito 999-1776

SIGN HERE:

DA FORM 2028-2 (TEST) AUG 74

P.S.—IF YOUR OUTFIT WANTS TO KNOW ABOUT YOUR MANUAL "FIND" MAKE A CARBON COPY OF THIS AND GIVE IT TO YOUR HEADQUARTERS.

HISA 1686-75

RECOMMENDED CHANGES TO EQUIPMENT TECHNICAL MANUALS



THEN... JOT DOWN THE DOPE ABOUT IT ON THIS FORM, TEAR IT OUT, FOLD IT AND DROP IT IN THE MAIL!

SOMETHING WRONG WITH THIS MANUAL?

FROM: (YOUR UNIT'S COMPLETE ADDRESS)

DATE

PUBLICATION NUMBER

DATE

TITLE

TH 11-5805-640-23P

9 NOV 77

BE EXACT... PIN-POINT WHERE IT IS

IN THIS SPACE TELL WHAT IS WRONG AND WHAT SHOULD BE DONE ABOUT IT.

PAGE NO.	PARAGRAPH	FIGURE NO.	TABLE NO.

TEAR ALONG DOTTED LINE

TYPED NAME, GRADE OR TITLE, AND TELEPHONE NUMBER

SIGN HERE:

DA FORM 2028-2 (TEST)
1 AUG 74

P.S.--IF YOUR OUTFIT WANTS TO KNOW ABOUT YOUR MANUAL "FIND," MAKE A CARBON COPY OF THIS AND GIVE IT TO YOUR HEADQUARTERS.

FILL IN YOUR
UNIT'S ADDRESS

FOLD BACK

DEPARTMENT OF THE ARMY

POSTAGE AND FEES PAID
DEPARTMENT OF THE ARMY
DDG-314



OFFICIAL BUSINESS
PENALTY FOR PRIVATE USE, \$300

Commander
US Army Electronics Command
ATTN: DRSEL-MA-Q
Fort Monmouth, New Jersey 07703

TAKE ALONG POSTED LEAF

FOLD BACK

REVERSE OF DA FORM 383-3 (TEST)

RECOMMENDED CHANGES TO EQUIPMENT TECHNICAL MANUALS



SOMETHING WRONG WITH THIS MANUAL?

THEN... JOT DOWN THE DOPE ABOUT IT ON THIS FORM, TEAR IT OUT, FOLD IT AND DROP IT IN THE MAIL!

FROM: (YOUR UNIT'S COMPLETE ADDRESS)

DATE

PUBLICATION NUMBER

DATE

TITLE

BE EXACT... PIN-POINT WHERE IT IS

IN THIS SPACE TELL WHAT IS WRONG AND WHAT SHOULD BE DONE ABOUT IT:

PAGE
NO.

PARA-
GRAPH

FIGURE
NO.

TABLE
NO.

TEAR ALONG DOTTED LINE

TYPED NAME, GRADE OR TITLE, AND TELEPHONE NUMBER

SIGN HERE:

DA FORM 2028-2 (TEST)
1 AUG 74

P.S.--IF YOUR OUTFIT WANTS TO KNOW ABOUT YOUR MANUAL "FIND," MAKE A CARBON COPY OF THIS AND GIVE IT TO YOUR HEADQUARTERS.

FILL IN YOUR
UNIT'S ADDRESS

FOLD BACK

DEPARTMENT OF THE ARMY

OFFICIAL BUSINESS
PENALTY FOR PRIVATE USE, \$300

POSTAGE AND FEES PAID
DEPARTMENT OF THE ARMY
DDG-314



Commander
US Army Electronics Command
ATTN: DRSEL-MA-Q
Fort Monmouth, New Jersey 07703

SEAL ALONG DOTTED LINE

FOLD BACK

REVERSE OF DA FORM 202-2 (TEST)

By Order of the Secretary of the Army:

BERNARD W. ROGERS
General, United States Army
Chief of Staff

Official:

J. C. PENNINGTON
Brigadier General, United States Army
The Adjutant General

Distribution:

Active Army:

USASA (2)
COE (1)
TSG (1)
USAARENBD (1)
DARCOM (1)
TRADOC (2)
OS Maj Comd (4)
TECOM (2)
USAC (4)
MDW (1)
Armies (2)
Corps (2)
HISA (Ft Monmouth) (33)
SVC Colleges (1)
USASIGS (5)
USAADS (2)
USAFAS (2)
USAARMS (2)
USAIS (2)
USAES (2)
USAICS (3)

MAAG (1)
USARMIS (1)
USAERDAA (1)
USAERDAW (1)
Army Dep (1) except
Fort Carson (5)
Fort Gillem (10)
Fort Gordon (10)
Fort Huachuca (10)
Ft Richardson (ECOM Ofc) (2)
LBAD (14)
SAAD (30)
TOAD (14)
SHAD (8)
USA Dep (2)
Sig Sec USA Dep (2)
Sig Dep (2)
Sig FLDMS (Less Europe) (1)
Units org under fol TOE: (1)
29-184
29-186

NG: None

USAR: None

For explanation of abbreviations, used see AR 310-50

**DEPARTMENT OF THE ARMY
US ARMY AG PUBLICATIONS CENTER
1655 WOODSON ROAD
ST. LOUIS, MISSOURI 63114**

**OFFICIAL BUSINESS
PENALTY FOR PRIVATE USE \$300**

**POSTAGE AND FEES PAID
DEPARTMENT OF THE ARMY
OOD 314**

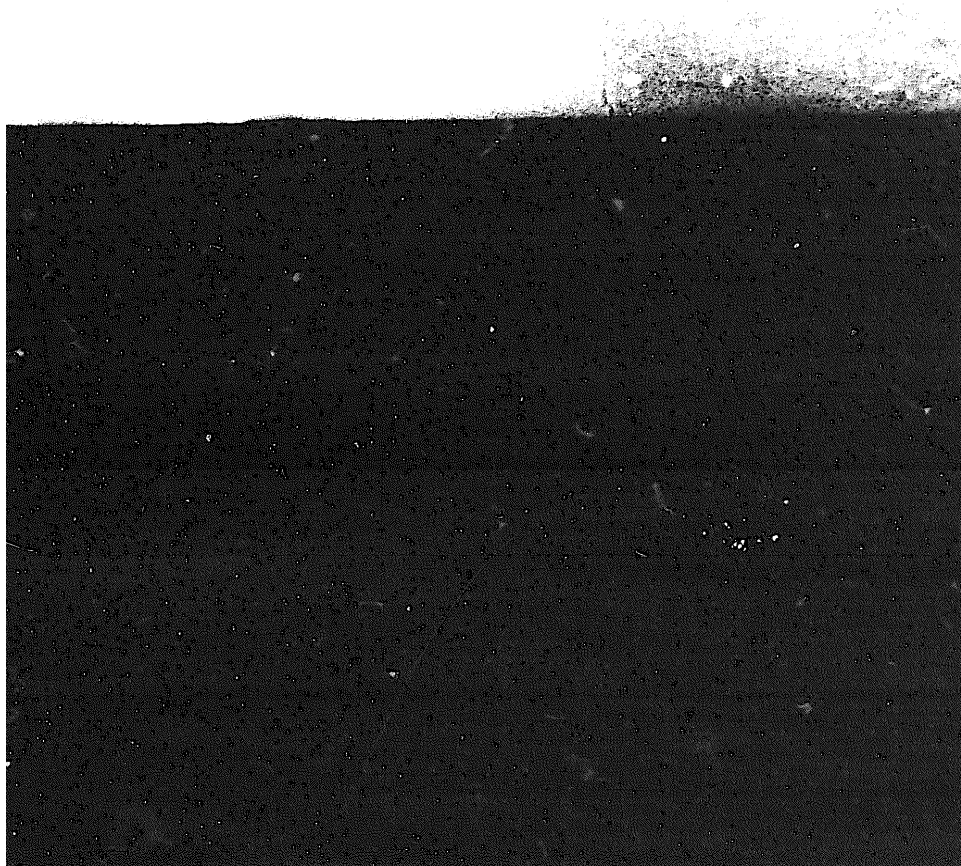


END

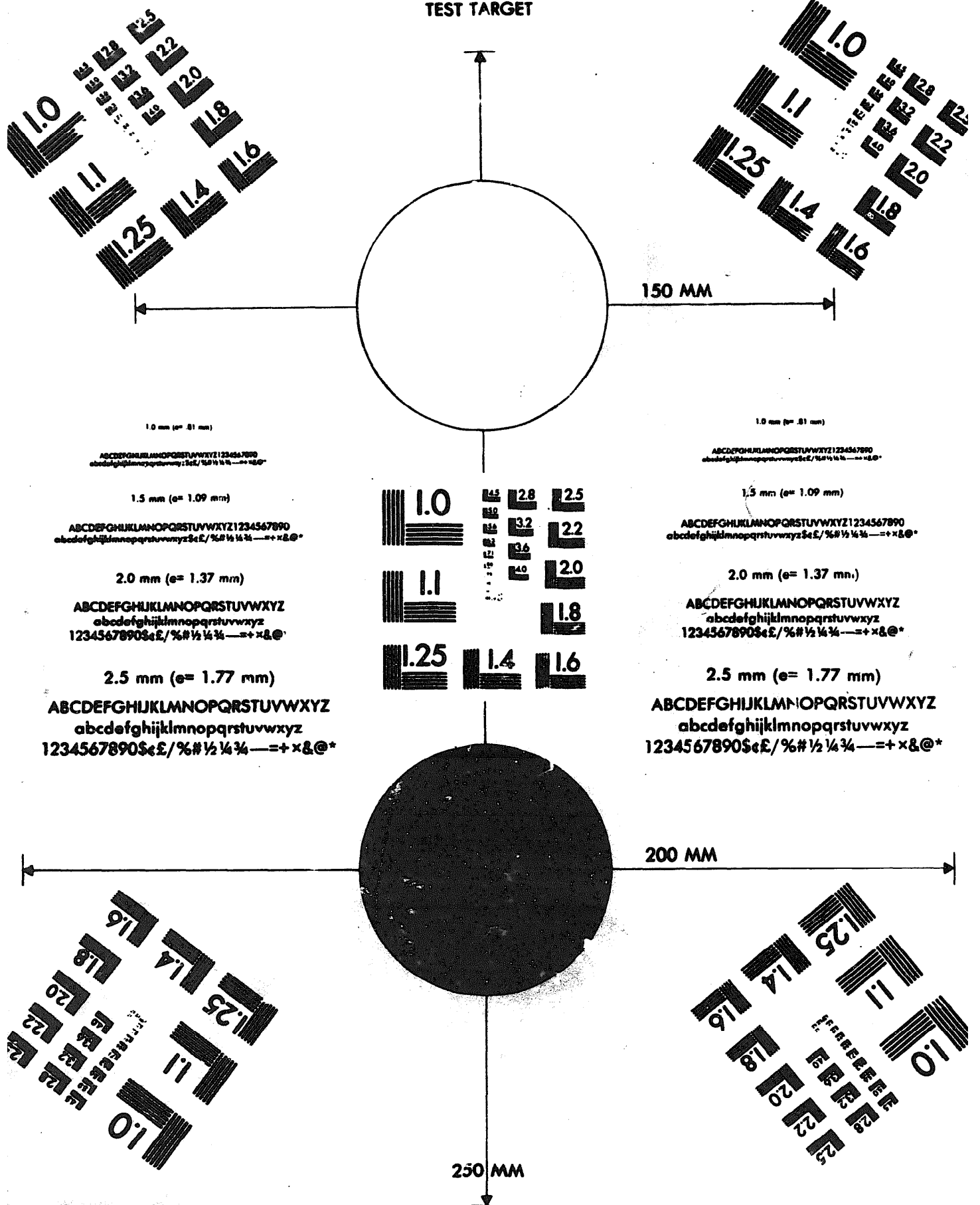
02-05-83

DATE





MICROFORM TEST TARGET



1.0 mm (e= .81 mm)

ABCDEFGHIJKLMN OPQRSTUVWXYZ 1234567890
abcdefghijklmnopqrstuvwxyz \$%&/'%# 1/2 1/4 3/4 —=+ x&@*

1.5 mm (e= 1.09 mm)

ABCDEFGHIJKLMN OPQRSTUVWXYZ 1234567890
abcdefghijklmnopqrstuvwxyz \$%&/'%# 1/2 1/4 3/4 —=+ x&@*

2.0 mm (e= 1.37 mm)

ABCDEFGHIJKLMN OPQRSTUVWXYZ
abcdefghijklmnopqrstuvwxyz
1234567890\$%&/'%# 1/2 1/4 3/4 —=+ x&@*

2.5 mm (e= 1.77 mm)

ABCDEFGHIJKLMN OPQRSTUVWXYZ
abcdefghijklmnopqrstuvwxyz
1234567890\$%&/'%# 1/2 1/4 3/4 —=+ x&@*

1.0 mm (e= .81 mm)

ABCDEFGHIJKLMN OPQRSTUVWXYZ 1234567890
abcdefghijklmnopqrstuvwxyz \$%&/'%# 1/2 1/4 3/4 —=+ x&@*

1.5 mm (e= 1.09 mm)

ABCDEFGHIJKLMN OPQRSTUVWXYZ 1234567890
abcdefghijklmnopqrstuvwxyz \$%&/'%# 1/2 1/4 3/4 —=+ x&@*

2.0 mm (e= 1.37 mm)

ABCDEFGHIJKLMN OPQRSTUVWXYZ
abcdefghijklmnopqrstuvwxyz
1234567890\$%&/'%# 1/2 1/4 3/4 —=+ x&@*

2.5 mm (e= 1.77 mm)

ABCDEFGHIJKLMN OPQRSTUVWXYZ
abcdefghijklmnopqrstuvwxyz
1234567890\$%&/'%# 1/2 1/4 3/4 —=+ x&@*

200 MM

250 MM